

---

# Bottle Cap Inspection

---

[nswtechnology.com](http://nswtechnology.com)



# EAGLE EYE

INSPECTION

Equipped with a 360 degree vision camera to inspect bottle cap sealing quality and a side camera to inspect bottle fill level and label position at a competitive market price.



360° Camera

Missing Cap



Loose Cap



Crooked Cap



Missing Skirt



Tear in Skirt



Cap Horizontal Tear



Cap Vertical Tear



Side Camera

Fill Level



Label Position

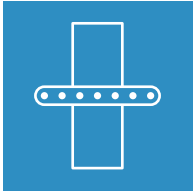




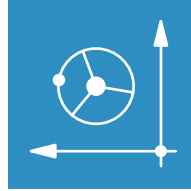
Supports all common used container and cap models in the beverage industry.



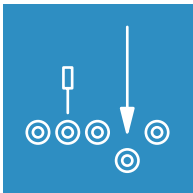
Inspection of 90,000 bottles per hour achievable.



Stand-alone inspection system for easy instalment above conveyors.



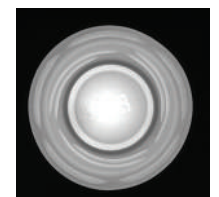
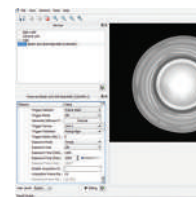
Easy adjustment of X and Y position with hand-wheel.



Encoder feedback system to track 'faulty product' location for correct triggering of rejects stations.



Budget-friendly entry level inspection system.



### SPECIFICATIONS

Application	: Plastic, Aluminium, Steel Caps
Product Height	: 400mm Adjustment Range
Inspection Speed	: Max. 90,000 Bottles / Hour
Voltage	: Input 220 - 460v, 1 phase, 50 / 60hz
Material	: Stainless Steel (Food Grade)
Dimensions	: H 2581mm x W 1267mm x D 571mm

people. passion. technology.

180508\_01\_EEI\_EN

NSW makes every effort to maintain the accuracy and quality of the information provided in this catalogue. However, NSW cannot guarantee and assumes no legal liability or responsibility for the accuracy or completeness of the information provided in this catalogue.

The information contained on this catalogue is for general guidance only. You should neither act, nor refrain from action, on the basis of any such information. You should take appropriate professional advice on your particular circumstances because the application of our equipment may vary depending on particular circumstances.

The copyright of all content on this catalogue is owned by NSW and/or the various manufacturers of our equipment. No part of the NSW catalogue may be changed, reproduced, stored in or transmitted on any website or medium without the prior written permission of NSW. Requests to republish any material must be sent to [press@nswtechnology.com](mailto:press@nswtechnology.com)

nswtechnology

